

# BT058 WIRELESS SPEAKER INSTALLATION GUIDE

Congratulations and thank you for choosing this **BT058** Bluetooth wireless speaker which enables to listen music from A2DP Bluetooth source device such as MP3 player, computer, mobile phone, smartphone or tablet PC. You can also connect this wireless speaker to notebook computer or desktop computer via 3.5 mm Jack stereo audio wire (not included).

The speaker support APTX technology enabling to have digital loss less high definition sound from Bluetooth source.

Switching between music and phone calls, speaker also allows you to answer or make calls with the Bluetooth-enabled smartphone while you are listening to music.

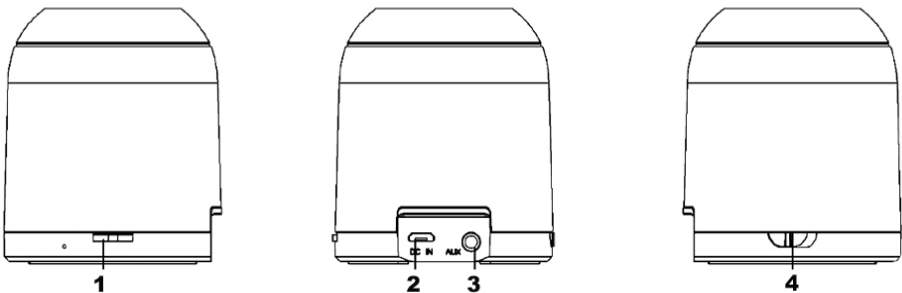
After you ended the call, the music will follow to be streamed in few seconds.

This device is intended to be used for domestic household.

## Technical specification

- Bluetooth wireless speaker
- Output power: 3W RMS
- Compatible with iPhone/iPad/Windows 8/Android
- Compatible with Bluetooth 2.1+EDR,A2DP 1.2,AVRCP 1.0
- Frequency response: 90 Hz – 20000 Hz
- Sensitivity: 80 dB+/-2 dB
- SNR (signal to noise ratio) > 76 dB
- Powered by Lithium battery rechargeable by USB in 2 hours
- Buttons: Play/Pause/Volume-/Volume+/Previous file/Next file/Handsfree,Power ON/OFF
- Jack stereo plug for connection to audio device
- Working range up to 10 meters/32 feet in open space
- Plug type: micro USB, 3.5 mm stereo Jack
- Dimensions in mm: 61 x 61 x 71 (HxWxD)

## Speaker buttons



- 1 : Play/Pause/Volume-/Volume+/Previous file/Next file/Handsfree button  
2 : Micro USB plug to charge the speaker  
3 : 3.5 mm Jack stereo Aux plug  
4 : ON/OFF switch

## Installation

Put the speaker on plane surface. Adjust according to your desire the position and the distance of the speaker to your Bluetooth peripheral. Put the power switch to position ON.

The LED indicator will lit in blue. You have to pair the **BT058** speaker to your Bluetooth device.

## Speaker pairing

Before using wireless **BT058** speaker, check that it has enough power to operate. Check that your Bluetooth peripheral is compliant or has the right connection to be used with the speaker.

To use your Bluetooth **BT058 speaker**, you must first pair the headset with a smartphone or a Tablet PC, iPad or computer. Pairing is the process of establishing encrypted link between wireless speaker and your Bluetooth device. Once your Bluetooth **BT058** speaker is paired with your device, they will remain paired and automatically recognize each other whenever they are within range. You have just to turn on the speaker by putting the power switch to the ON position. The LED indicator will be flashing in blue to detect Bluetooth enabled device in your vicinity. It will be off if no Bluetooth device is detected within 5 minutes. Activate the Bluetooth function of your device and search for **BT058** device. Once you have detected it, pair it with your Bluetooth device. Led indicator will be flashing in blue when speaker is paired and is working with your device.

If you need to pair **BT058** speaker with another Bluetooth device, power off the speaker and power on again the speaker. You have to start another pairing sequence.

## Pairing speaker with iPad

Go to **Settings** in the desktop of your iPad. Tap on **General**. Check that **Bluetooth** is on position **ON**. If it is on **OFF**, tap on it to turn it on. Power on the speaker until the blue LED flashes.

Wait for the pairing process to complete. If the connection is successful, you will hear short bip. Otherwise wait for the pairing process to complete. A message will display that **BT058** speaker is connected. You can use it with your iPad. The LED of the speaker will flash in blue during the use of the speaker. If the pairing failed, do again the process until you succeed.

## Pairing speaker with Android

Go to your Android device menu. Go to **Applications**, then **Settings**. Touch **Wireless and networks**. Touch **Bluetooth**. Check that Bluetooth is enabled, otherwise touch **Bluetooth** again. Power on Bluetooth speaker, the LED flashes in blue. Touch **Bluetooth settings**. Touch **Search for devices**. The speaker will appeared in **Devices list** as **BT058**. Speaker Bluetooth LED indicator will blink in blue. Wait for the pairing process to complete.

If the connection is successful, you will see that **BT058** speaker is connected. You can use it.

The LED of the speaker will flash in blue during the use of the speaker.

If the pairing failed, do again the pairing process until you succeed.



## Play/Pause music

Press  button one time to play or pause music.


Push the button to – shortly to select previous multimedia file. Keep pushing button of the speaker to – to decrease the volume.

Push the button to + shortly to select next multimedia file. Keep pushing button of the speaker to + to decrease the volume.


## Answer a Call

If there is an incoming call while you are listening to the streaming music, you will hear beep prompt from **BT058** speaker. Just press  button one time to answer. Press again  to hang up and to end a call.

## Refuse a Call

When there is incoming call, hold  button. The call is refused and rejected.

## Redial the last dialed number

Double click  button to redial the last phone call.

## Aux plug

Connect one end of the 3.5 mm Jack stereo plug to the 3.5 mm Jack stereo plug of your audio device such as smartphone, mobile phone, computer, and the other end of the 3.5 mm Jack stereo plug to Aux plug of the **BT058** speaker. You have to connect to audio output in green plug of your computer. You have to adjust the volume of your audio device to set the volume. LED indicator blinks in blue when you are using the speaker in Jack stereo mode.

Press **▶||** button one time to play or pause music.

Keep pushing button of the speaker to – to decrease the volume.

Keep pushing button of the speaker to + to increase the volume.

## Battery and Charging Notice

- The speaker has built-in rechargeable battery. A normal charging process takes about 2 hours. LED will turn on in red when charging and will turn off when charging is finished. You can continue to use the speaker during the charge. Use the delivered USB cable to connect one end to the speaker (micro USB plug) and the other end to USB computer plug
- Please make sure the battery has been fully charged and fully released at the beginning of first use to ensure the battery the best performance
- Always use delivered USB power cable to charge the speaker. Using any incorrect power supply cable can cause damage and void the warranty
- After finished charging, please pull out the cable from the speaker and from the computer
- Do not put the speaker in charging state for a long time. This will shorten the lifetime of the battery

## Trouble shooting

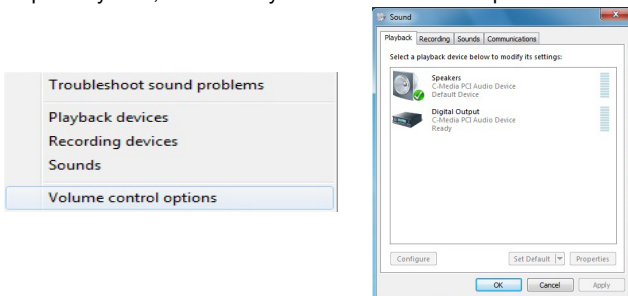
If disconnection occurs, please check the following factors:

- Ensure that the speaker has enough power, is turned on and has been successfully paired to your Bluetooth peripheral
- Bluetooth function of Bluetooth peripheral is enabled
- Bluetooth peripheral must support A2DP and AVRCP standard

If you have no sound with your Android device, check that you have enable Audio in device settings.

If your computer has not HSP, A2DP or Bluetooth 4.0 function, speaker will not be compliant in wireless mode, but it can be used by using 3.5mm Jack stereo wire (not included).

In your computer system, check that you have checked the speaker case as shown below :



This speaker is not compliant with Windows 8 phone because this system has not yet bluetooth driver. You may not set up the volume with some Bluetooth device such as SONY VITA.



This product is in compliance with the essential requirements of the European Directives for which it is concerned. You can download declaration of conformity on the website : <http://www.espacepc.com>