

BT023 WIRELESS SPEAKERS INSTALLATION GUIDE

Congratulations and thank you for choosing this **BT023** Bluetooth wireless speakers which enable to listen music from A2DP Bluetooth source device such as MP3 player, computer, mobile phone, smartphone or tablet PC. You can also connect this speaker via Jack stereo audio wire.

The speaker support APTX technology enabling to have digital loss less high definition sound from Bluetooth source.

Switching between music and phone calls, speaker also allows you answer or make calls with the Bluetooth-enabled smartphone while you are listening to music.

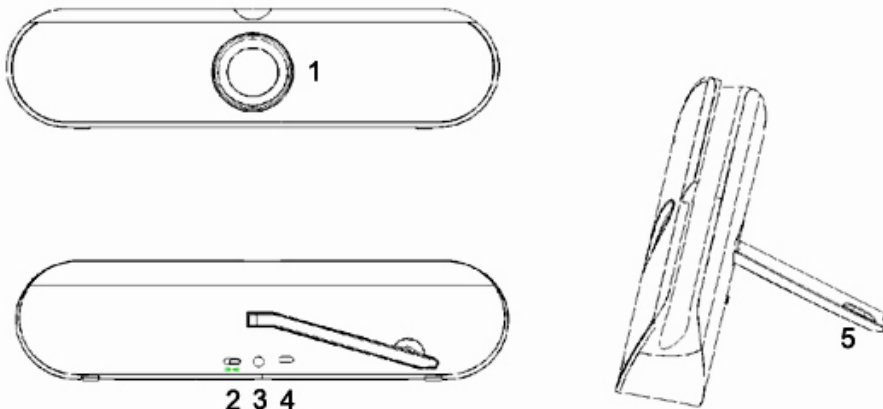
After you ended the call, the music will follow to be streamed in few seconds.

You can connect it directly to notebook computer or desktop computer via Jack stereo audio wire.

Technical specification

- Bluetooth wireless speakers
- Output power:2x5W RMS
- Compatible with iPhone/iPad/Windows Phone 8/Android
- Compatible with Bluetooth 2.1+EDR,A2DP1.2,AVRCP1.0,NFC
- Powered by 1050mA Lithium battery rechargeable by USB in 3 hours
- Buttons: Play/Stop/Handsfree,Bluetooth,Power ON/OFF
- Jack stereo plug for connection to audio device
- Working range up to 10meters/32feet in open space
- Plug type: micro USB,3.5mm stereo Jack
- Dimensions in mm: 62 x 240 x 41 (HxWxD)

Speaker buttons



1 : Bluetooth/Play/Pause/Handsfree button 2 : ON/OFF switch
3 : 3.5 mm Jack stereo Aux plug 4 : Micro USB plug 5: Hidden adjustable holder

Power on BT023 speakers

Put the speakers on plane surface. Adjust according to your desire the position and the distance of the speakers to your Bluetooth peripheral. Put the power switch to ON.

The LED indicator will lit in white, you have to pair the **BT023** speaker to your Bluetooth device.

BT040 speaker pairing

Before using the **BT023** speaker, check that it has enough power to operate. Check that your Bluetooth peripheral is compliant or has the right connection to be used with the speaker.

To use your Bluetooth **BT023 speaker**, you must first pair the headset with a smartphone or a Tablet PC, iPad or computer. Once your Bluetooth **BT023 speaker** is paired with your device, they will remain paired and automatically recognize each other whenever they are within range.

Pairing is the process of establishing encrypted link between **BT023** speaker and Bluetooth device.

Pairing BT023 speaker with Windows 8

From the **App list** screen, tap on **Settings**, then click on **Bluetooth**.

Check that **Bluetooth** is on position **ON**. If it is on **OFF**, tap on it to turn it on.

Press ► button of the speaker for about 3 seconds until the LED flash in white.

The speaker will appeared in **Devices** as **BT023** and is not yet paired. Tap on it. Let the device search for the **BT023** speaker. Wait for the pairing process to complete.

If the connection is successful, there will be a short bip. LED will glitter in white during the use of the speaker. Otherwise wait for the pairing process to complete.

A message will display that the speaker is connected. You can use it with your device. If the pairing failed, do again the process until you succeed.

Pairing the BT023 speaker with iPad

Go to **Settings** in the desktop of your iPad. Tap on **General**. Check that **Bluetooth** is on position **ON**.

If it is on **OFF**, tap on it to turn it on. Press ► button of the speaker button for about 3 seconds until the white LED flash. Wait for the pairing process to complete.

If the connection is successful, you will hear short bip. Otherwise wait for the pairing process to complete. A message will display that the speaker is connected. You can use it with your iPad.

The LED of the speaker will flash in white during the use of the speaker.

If the pairing failed, do again the process until you succeed.

Pairing the BT023 speaker with Android

Go to your Android device menu. Go to **Applications**, then **Settings**. Touch **Wireless and networks**.

Touch **Bluetooth**. Check that Bluetooth is enabled, otherwise touch **Bluetooth** again. Press Bluetooth button for about 3 seconds until the LED flash in white.

Touch **Bluetooth settings**. Touch **Search for devices**. The speaker will appeared in **Devices list** as **BT040**. The speaker Bluetooth LED indicator will blink in white. Wait for the pairing process to complete.

If the connection is successful, you will see that the BT040 speaker is connected. You can use it.

The LED of the speaker will flash in white during the use of the speaker.

If the pairing failed, do again the pairing process until you succeed.

Aux plug



Connect one end of the 3,5mm Jack stereo plug to the input of your audio device such as smartphone, mobile phone, computer, and the other end of the 3,5mm Jack stereo plug to rear Aux plug of the Bluetooth BT023 speaker. You have to adjust the volume of your audio device to set the volume.

If you press ►, you will enter mute mode. Press again ► to access to sound. The LED indicator blinks in white when you are using the speaker in Jack stereo mode.


Play/Pause music

Press ► button one time to play or pause music.


Answer a Call

If there is an incoming call while you are listening to the streaming music, you will hear beep prompt from the BT023 speaker..Just press  button one time to answer.Press again  to hang up and to end a call.

Refuse a Call

When there is incoming call, hold  button The call is refused.

Redial the last dialed number

Double click  button to redial the last phone call.

Battery and Charging Notice

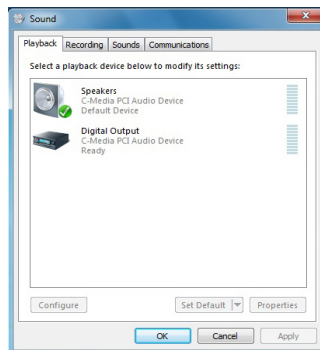
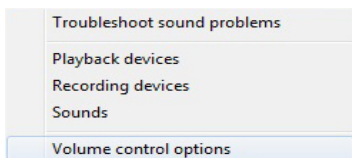
- The speaker BT023 has built-in rechargeable battery. A normal charging process takes about 3 hours. The LED will turn on in white when charging and will turn off when charging finished. You can not continue to use the speaker during the charge. Use the delivered USB cable to connect one end to the speaker (micro USB plug) and the other end to USB computer plug
- Please make sure the battery has been fully charged and fully released at the beginning of use to ensure the battery the best performance
- Always use delivered USB power cable to charge the speaker. Using any incorrect power supply cable can cause damage and void the warranty
- After finished charging, please pull out the cable from the speakers and from the computer
- Do not put the speaker in charging state for a long time. This will shorten the lifetime of the battery

Trouble shooting

If disconnection occurs, please check the following factors:

- Ensure that the speaker has enough power, is turned on and has been successfully paired to the Bluetooth peripheral.
- Bluetooth function of Bluetooth peripheral is enabled.
- Bluetooth peripheral must support A2DP and AVRCP standard.

If you have no sound with your Android device, check that you have enable Audio in device settings. In your computer system, check that you have checked the speakers case as shown below :



This product is in compliance with the essential requirements of the European Directives for which it is concerned. You can download declaration of conformity on the website : <http://www.espacepc.com>