



DOCKING STATION FOR SATA HDD INSTALLATION GUIDE

Thank you for buying this product which will respond to your storage needs.
Read carefully this manual and keep it in safe place before using this product.
This docking station uses the latest technology USB v3.0 which is up to 10 times faster than USB v2.0.
You will be able to install 2.5"/3.5" SATA hard disk in 1.5/3/6 Gb/s to backup your precious data.
Moreover it has eSATA plug. It supports also USB v1.1 and USB v2.0 modes.

Package contents

- 1 docking station
- 1 user's manual
- 1x12V 3A power supply unit
- 1 USB V3.0 cable
- 1 eSATA cable

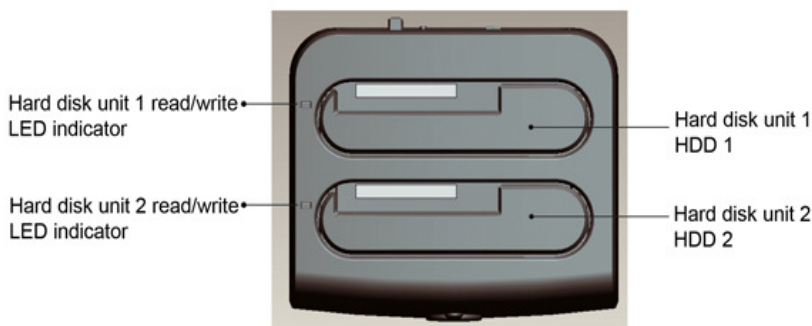
Technical specifications

- Simple to install and to use, easy ejection of the hard disk
- Supports USB v3.0, SATA 1.5/3/6 Gb/s
- Supports eSATA, USB v2.0, USB v1.1
- Compliant with 2.5"/3.5" SATA 1.5/3/6 Gb/s hard disks from 10 Go to 3 To, even more
- Compatible with Hot plug: allows unplugging the device without rebooting your computer
- Data transfer USB v3.0 up to 5 Gb/s, USB v2.0 up to 480 Mb/s
- Data transfer eSATA up to 3 Gb/s

Minimum system required

PC computer or notebook with USB v3.0 port and eSATA plug
Windows XP/VISTA/7/8 in 32/64 bits, MAC OS 10 or superior

Hardware installation

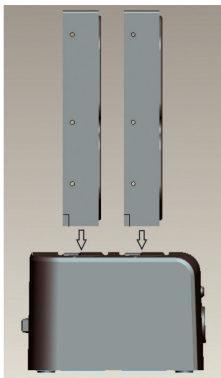


Insert the 2.5" or 3.5" hard disk inside the docking station by matching slot SATA connectors.
The read/write LED indicator associated with the hard disk slot will lit in red showing that the hard disk is powered and the docking is ready to work. Whenever you access to save or to copy data, the read/write LED indicator associated with the hard disk slot will blink in red. It is not recommended to pull off the hard disk unit when the LED indicator is blinking otherwise you might lose data and damage the hard disk.

You can insert 1 To 2.5" hard disk and 3 To 3.5" hard disk or more.

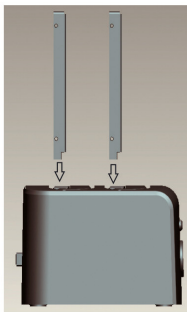
You can install interchangeably one or two hard disk on any HDD 1 or HDD 2 slots. You can put 2.5" or 3.5" hard disk unit or SSD.

01



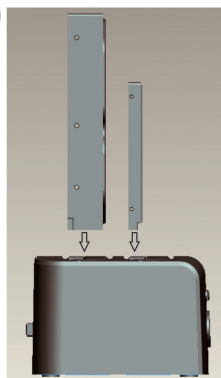
2x3.5" SATA hard disks

02



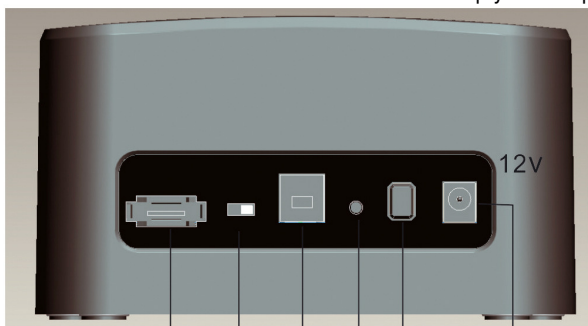
2x2.5" SATA hard disks

03



1x3.5" SATA hard disk
and 1x2.5" SATA hard disk

Connect the docking station to your computer USB v3.0 or eSATA port. Connect the power supply to the mains and to the docking station. Press the power switch to power on and to use the docking station. The read/write LED indicator will remain lit in red. Boot up your computer.



eSATA port

Clone/PC switch

USB V3.0 port

Power switch

DC plug

Clone button

Hard disk ejection

To remove the hard disk unit, wait a while that the hard disk cools down. Then pull out the hard disk. Take care of the hard disk unit. Do not let it drop. Press and hold the docking base. Pull out the hard disk. If you are transferring data or if the LED is blinking, do not remove the hard disk unit, wait until the end of the data transfer and the blinking stop

Caution: do not shake the hard disk once it has been inserted in the docking station in order to avoid to damage the hard disk unit. When you insert the hard disk in the docking station, check that SATA connectors match with each other, otherwise the hard disk will not be recognized.

eSATA connection

You can not use simultaneously eSATA port and USB port.

If you use eSATA interface, you may have to reboot your system in order that the hard disk is recognized by the system. Your SATA motherboard chipset has to be compliant with the hot plugging function to detect the hard disk without rebooting. By example the **SILICON IMAGE SIL 3132** chipset is hot plugging. Consult the handbook of your motherboard to know if it is hot plugging.

You will need eSATA cable to connect the docking station to your computer eSATA port. If your computer has no eSATA port, you can add bracket eSATA to SATA. If your notebook has no eSATA port, you can add EXPRESS CARD eSATA port.

Windows driver installation

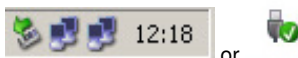
The system will automatically detect and install the driver of the docking station. It is driverless. An icon will appear below the task bar. You can start to use the docking station

MAC OS driver installation

The system will automatically detect and install the driver if you have MAC OS 10 or above.

Safe removal of the docking station

To remove safely the docking station, click on the green arrow below the left taskbar.



Click on **Safely Remove Hardware**.

or

If you cannot manage to safely remove, close **My computer**, all windows and all applications.

Then click again on **Safely remove Hardware**. A window will validate under WINDOWS the possibility to safely disconnect the docking station. Click on **OK**.

You can unplug the USB cable from the computer and shut down the docking station before removing.

If you pull out the docking station or unplug its power adapter cable, you can have some trouble through a warning message which can lead to a computer crash and the loss of your precious data.

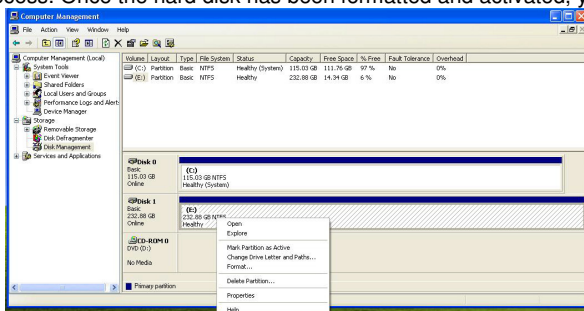
If you disconnect brutally the docking station, you might have a computer crash and lose your data.

Moreover, the electronic parts of the docking station may be subjected to overload peaks which can lower its life span. Do not forget to remove the power supply unit.

Hard disk initialization

-For a brand new hard disk, you should proceed as follow:

If you install un-partitioned or un-formatted new drive, it does not automatically appear in "**My Computer**" the first time. Please follow these steps: right click on "**My computer**", choose "**Manage**" then choose "**Disk management**" in "**Storage**". The operating interface will show on the computer, Subarea **Format** following the operating interface. Go to "**My Computer**", locate the removable disk, right click on it, and select "**Format**" from the drop-down list, follow the instructions to complete the formatting process. Once the hard disk has been formatted and activated, you can use it.



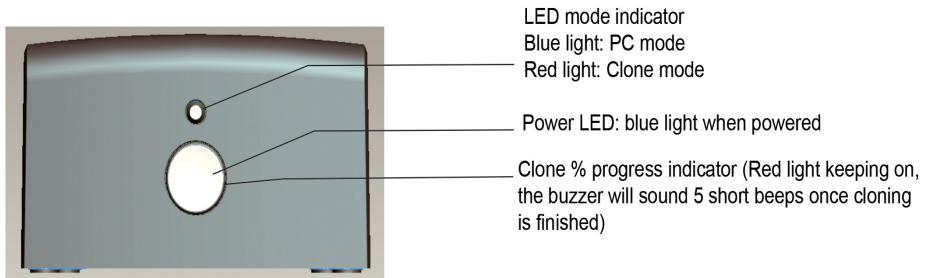
By this method to format your drive it will result in a single partition in largest drive capacity, which is also highly recommended.

-For a hard disk which had already been formatted:

Go to **"My computer"**, you should see the removable disk. Warning: backup your data before formatting the hard disk. Right click and choose **"Format"**, follow the instructions on screen. After the reboot, there will be a new letter assigned to the hard disk.

Utilization

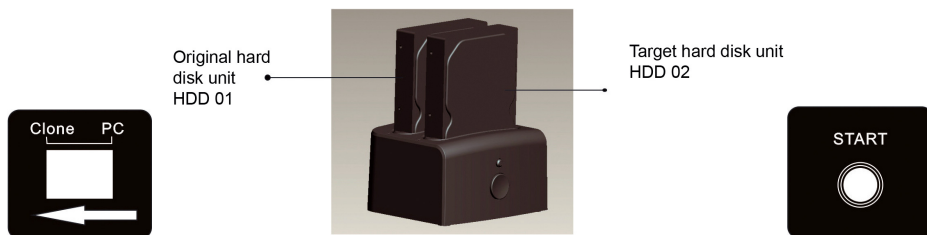
- You can not use simultaneously eSATA port and USB port.
- Whenever you start the docking station, you have to put the Clone/PC switch on PC to use it with your computer. The POWER Led lights blue when the docking station is functioning. Reader/Writer Led associated with hard disk unit HDD 1 or HDD 2 is flashing in red whenever there is data transfer. You can use simultaneously one or two hard disks.



- Do not touch the edge of the power supply connector cable with your computer case
- Connect the docking station directly to your motherboard USB port. If you connect to front USB port, check that it supplies enough power.
- Place the docking station on stable ground.
- If you plan to not use the docking station for a long time, pull out the power supply unit.
- It is not recommended to use the docking station for 24/24 hours.
- Do not power off the docking station and do not pull off the hard disk if you are transferring data or if the Reader/Writer LED is blinking.
- If you install a 750 Go hard disk or more, you should power down the docking station after hours of continuous use because this kind of hard disk tends to heat.
- When you intend to not using the docking station for a long time, remove the power supply from the mains
- Manipulate carefully the docking station. If you drop it, the hard disk and the external enclosure might be defective.
- This docking station is not compliant with Windows 95/NT4/98SE/ME because it has no driver for these operating systems.
- If you use USB v2.0 or USB v1.1, the data transfer will be lower than with USB v3.0 port.
- If you connect in eSATA, you may have to reboot the system to enable the management of the docking station and its hard disk if your motherboard SATA chipset is not hot plugging.
- You can insert 2.5" or 3.5 " hard disk. It can support 1 To 2.5" hard disk unit and 3 To 3.5" hard disk unit and even more.

Cloning function

The docking station can support 2.5" or 3.5" hard disk duplication without computer connection. It is the blind write of the disk with its partitions. You can boot up from the disk copy. The destination copy hard disk must at least be equal or superior to the original hard disk unit, if not the cloning can not be made.



Insert the original hard disk on HDD 01 slot and the destination copy hard disk on HDD 02 slot. Connect the power supply unit to the mains and to the docking. You need not to connect USB or eSATA cable to start the cloning function. Put the Clone/PC switch on **Clone** position. Power on the docking. The front Clone/PC remain lit in red. Press the **Start** button for 5 seconds. The duplication will begin. The destination copy hard disk must at least be equal or superior to the original hard disk unit Excess capacity will not be seen. You can activate it, right click on **My computer**, choose **Manage** then choose **Disk management** in **Storage**. You can format unused partition to be able to be recognized by your computer.

Whenever you are using the cloning function; make sure that the Clone/PC switch is on **Clone** position, that the Clone/PC LED is lit in red. During the cloning, a red indicator LED will be flashing to the 4 cardinal corners represented by 25%, 50%, 75% and 100% copy. Once 25% copy has been made, the 25% LED indicator will remain lit red. Red indicator LED will only be flashing to the 3 cardinal corners represented by 50%, 75% and 100% copy. And so on until 100% copy. Buzzer will sound 5 short beeps when the cloning is finished. Hard disk will sleep automatically. You have to take off them and insert one by one. The system will not see both hard disk with same data.

Copy speed can reach up to 80 Mo/s according to the hard disk specifications. By example copying 500 Go takes 1h40.

FAQs

Q: I can't find the drive under my computer.

A: Please make sure your drive is correctly installed, and if it is formatted. Check that you have connected the USB cable. Unplug and plug again the external enclosure. Reboot the system if you connect in eSATA mode. Pull out and pull back the hard disk unit.

Q: After plugging the USB port, the drive is not spinning at all.

A: This usually means the AC adapter is not connected yet, so there is no power

Q: After installing the drive. Why it is still recognized as "Unknown device"

A: Pull out the hard disk and reconnect it. Disconnect the docking station and connect it again. Check that your HDD is formatted. Otherwise check if your HDD is not defective.

Q: Can I use external USB hub ?

A: Yes, USB hub works in the same way as the computer USB ports. Check that it is powerful to power the hard disk or adds external power supply to the hub

Q: My computer doesn't have USB v3.0 port, Can I use USB v3.0 host adaptor ?

A: USB v3.0 host adaptor works in the same way as the built-in USB ports.

Q: I do not have eSATA port ?

A: Use eSATA bracket by connecting to motherboard SATA port or you can add EXPRESS CARD eSATA port to your notebook computer.

Q: The cloning has failed.

A: Check that the hard disks are not defective or have some issue.



This product is in compliance with the essential requirements of the European Directives for which it is concerned. You can download declaration of conformity on the website : <http://www.connectland.eu>