

Thank you for buying this USB Bluetooth v2.0+EDR adapter. It will offer a powerful connection between your computer and your Bluetooth device. It installs easily without extra driver and can be used easily. It represents a practical solution for Bluetooth connection. Read carefully this manual before using this Bluetooth adapter.

You should find in the package a Bluetooth adapter, 1 user's manual. If one of this item is missing, contact quickly your reseller.

Minimum system required

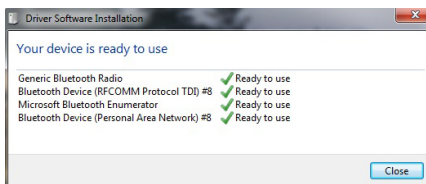
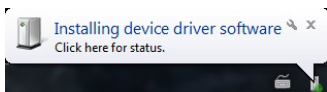
- ⌚ 1 computer with microprocessor Pentium II or more
- ⌚ 1 free USB port and 64MB RAM memory or more
- ⌚ Windows XP

Features

- ⌚ Bluetooth v2.0 norm, compatible with Bluetooth v1.2
- ⌚ EDR Enhanced Data Rate technology offering faster and more reliable data transfer
- ⌚ Compatible with USB v1.1, USB v2.0, USB v3.0
- ⌚ Data range up to 10 meter
- ⌚ Frequency range: 2.4 GHz
- ⌚ Powered by USB port
- ⌚ Compliant with Windows XP/VISTA/7/8 in 32/64 bits

Hardware installation

Start Windows. Insert Bluetooth adapter. The system will detect Bluetooth peripheral. Driver installation should automatically begin. You do not need extra driver. The system has already embedded driver.

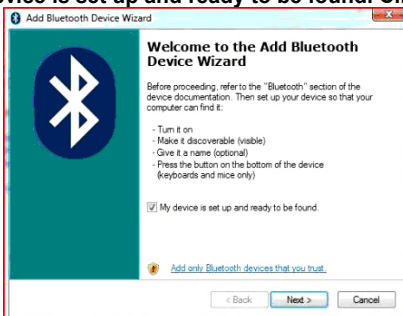


If a MICROSOFT warning about product signature appears, do not take in account, click on **Continue**. The USB Bluetooth adapter is now ready to use.

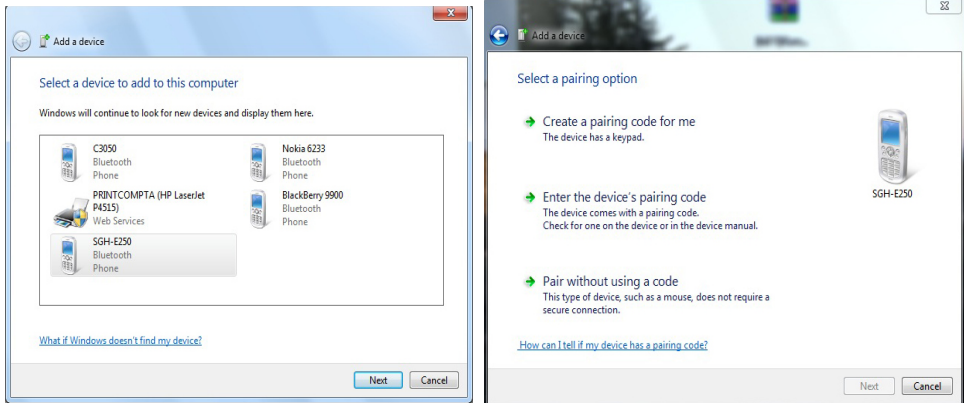
To add Bluetooth device to your Bluetooth adapter, just click on Bluetooth icon or right click.

You have to enable Bluetooth function on your Bluetooth device.

Or go to **Start, Control Panel, and then Hardware and sound**. Choose the tab **Add a Bluetooth device**. Check **My device is set up and ready to be found**. Click on **Next**.

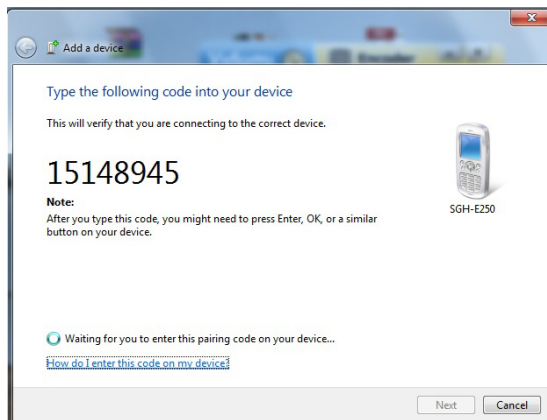


Click on Bluetooth device after enabling the Bluetooth function of your Bluetooth device. Then you will have a windows about Bluetooth device pairing.



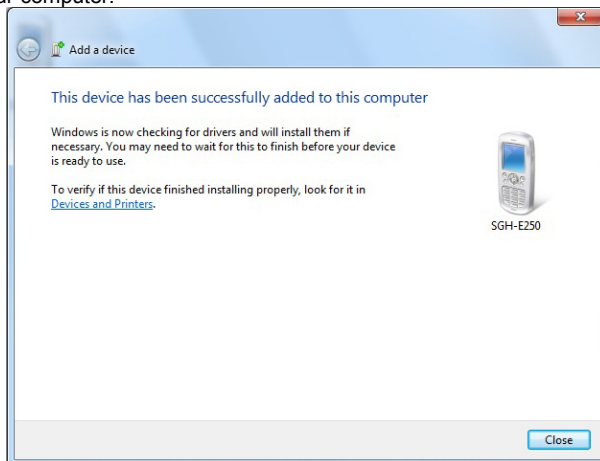
You must enter security code to associate Bluetooth adapter with your Bluetooth device. During the pairing or the physical connection of your computer equipped with Bluetooth adapter with another Bluetooth device, a security code is required. You can give any number sometimes. The security code between the Bluetooth device and your computer must be the same to enable the pairing between them. It must be the same between your Bluetooth device and your computer to achieve successfully the pairing. By default it is **0000**. Otherwise you must know the peripheral code. The Bluetooth software can propose you a number as security code. You can also choose to not use a security code among the options.

In our example we checked to choose a security code creating by the computer. You have to enter this number which is a number that you have to type in your Bluetooth device and validate by **Enter** case.



You have to enable Bluetooth function in your device to pair with your computer.

The system will install Bluetooth driver. Then click on **Close** once the device has been successfully paired with your computer.



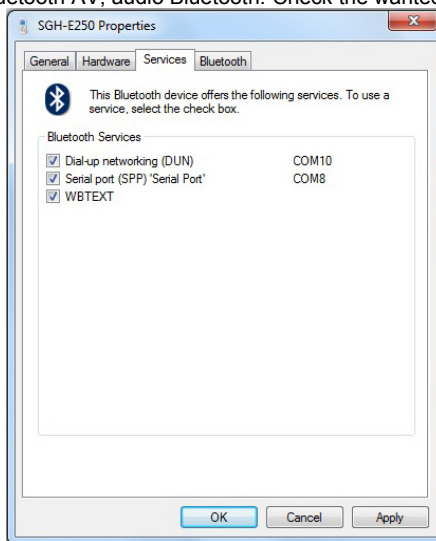
The operating distance between the 2 Bluetooth devices can theoretically reach up to 10 meters under certain conditions (in open space without any obstacle, without interference, in straight line).

Utilization of Bluetooth adapter

You can set up associated services to your Bluetooth adapter.

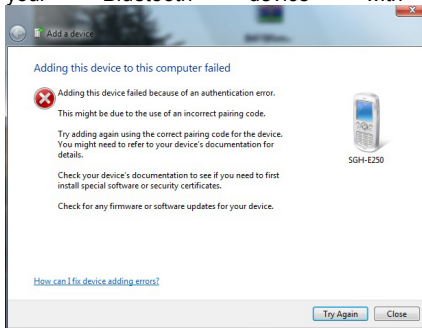
Choose the services to activate which are compatible with your Bluetooth adapter.

Here are some services which can be activated according to your Bluetooth device: Local area network access, Dial-up networking, Synchronization File transfer, Generic object exchange, printer service, HID service, fax, Bluetooth AV, audio Bluetooth. Check the wanted services and click on **OK**.

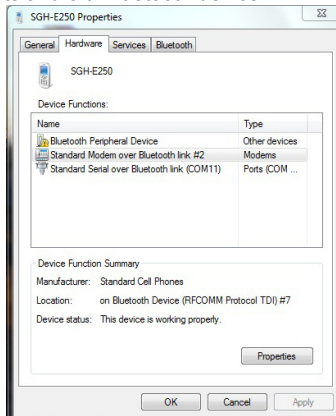


Troubleshooting

- Installation has been done without hassle but the adapter is not detected by computer
 - ⌚ Check that your USB port is working, by connecting for example USB keyboard or USB mouse.
 - ⌚ Check that if there is another driver or Bluetooth software already installed in your system. If so uninstall it.
- The adapter is working, but it is impossible to find any Bluetooth device
 - ⌚ Check the operating distance between Bluetooth adapter and Bluetooth device is equal or less than 10m
 - ⌚ Check that your Bluetooth device has enable Bluetooth function; see your Bluetooth device manual.
- Whenever you connect Bluetooth device, a security code may be required.
You can give any number code. It must be the same between your Bluetooth device and your computer to achieve. By default it is **0000**. Otherwise you will not be able to pair your Bluetooth device with USB Bluetooth adapter.



-If your computer can not install the driver for your Bluetooth device (this is the case when there is exclamation mark next to Bluetooth peripheral device), then you might not be able to use this device. It can happen with Windows 7 64 bits and old Bluetooth device.



This product is in compliance with the essential requirements of the European Directives for which it is concerned. You can download declaration of conformity on the website : <http://www.connectland.eu>