



# External enclosure for 3.5" SATA HDD INSTALLATION GUIDE

Thank you for buying this product which will respond to your storage needs.

Read carefully this manual and keep it in safe place before using this product.

This external enclosure uses the technology USB v3.0. Our storage products technologies use the latest technology and have a good quality/price ratio regarding performance, data transmission rate, life span. With this external enclosure, you will be able to install SATA hard disk to backup your precious data.

It supports One Touch Backup or OTB function. The Turbo USB enables to speed up data transfer.

Moreover, it supports USB v1.1 and USB v2.0 modes.

## Package contents

- 1 SATA 3.5" USB v3.0 external box
- 1 USB cable
- 1 user's manual
- 1 screwdriver and screws
- 1 CD driver for OTB utility and Turbo USB utility

## Technical specifications

- Simple to install and to use
- Compatible with Hot plug: allows unplugging the device without rebooting your computer.
- Transmission rates: USB v3.0 in Superspeed up to 5 Gbp/s, USB v2.0 in High speed up to 480 Mb/s
- High capacity: it is compliant with SATA hard disks from 10Go to 2To to backup high definition photos, valuable data, etc.

## Minimum system required

PC computer with USB v3.0 port with Windows XP/VISTA/7

## Hardware installation

Remove the 2 fastening screws at the lateral part of the external box. Keep them in a safe place. Remove the tray from the main body. Fasten the hard disk to the tray. Connect the cable SATA and power supply connector on the plate and on the disk drive SATA connector. Do not force: a mechanism avoids a wrong insertion of the hard disk on the SATA cable. It is impossible to mislead.

Consult the hard disk user's manual. If you don't know, ask for help your reseller.

Insert the tray with the hard disk in the main body. Fix the 2 screws. Connect the external enclosure to your computer USB port. Windows 7-VISTA-XP will automatically install the driver and will add a local or movable hard disk associated with a new letter. Otherwise, check if you have formatted the hard disk.

You have to connect USB plug of the external box to your computer.

## Hard disk initialization

-For a brand new hard disk, you should proceed as follow:

If you install un-partitioned or un-formatted new drive, it does not automatically appear in **"My Computer"** the first time. Please follow these steps: right click on **"My computer"**, choose **"Manage"** then choose **"Disk management"** in **"Storage"**. The operating interface will show on the computer, Subarea **Format** following the operating interface. Go to **"My Computer"**, locate the removable disk, right click on it, and select **"Format"** from the drop-down list, follow the instructions to complete the formatting process. Once the hard disk has been formatted and activated, you can use it.

By this method to format your drive it will result in a single partition in largest drive capacity, which is also highly recommended.

-For a hard disk which had already been formatted:

Go to **"My computer"**, you should see the removable disk. Warning: backup your data before formatting the hard disk. Right click and choose **"Format"**, follow the instructions on screen.

After the reboot, there will be a new letter assigned to the hard disk.

## Safe removal of the external enclosure USB

To remove safely the external enclosure, click on the green arrow below the left taskbar.



Click on **Safely Remove Hardware**.

If you cannot manage to safely remove, close **My computer**, all windows and all applications.

Then click again on **Safely remove Hardware**.

A window will validate under WINDOWS the possibility to safely disconnect the external enclosure. Click **OK**. You can unplug the USB cable from the computer and shut down the external box before removing.

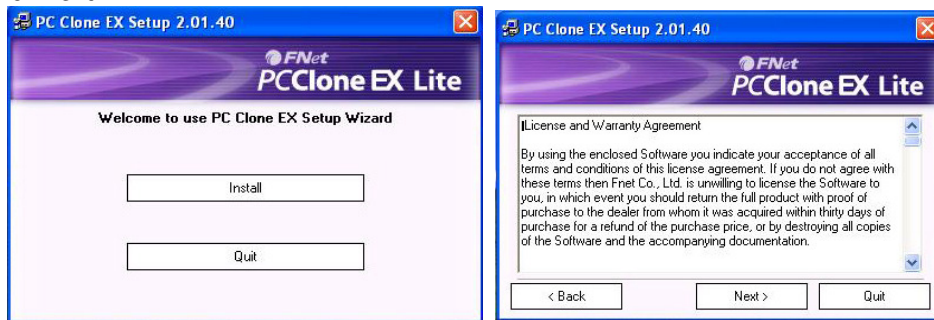
If you pull out the external enclosure or unplug its power adapter cable, you can have some trouble through a warning message which can lead to a computer crash and the loss of your precious data.

If you disconnect brutally the external box, you might have a computer crash and lose your data.

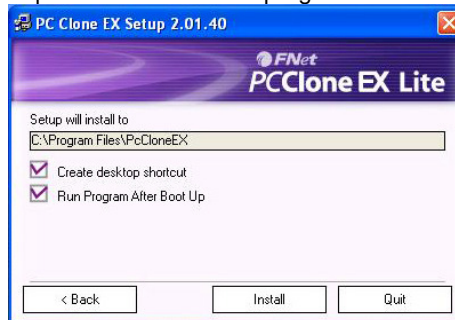
Moreover, the electronic parts of the external box may be subjected to overload peaks which can lower its life span.

## OTB or One touch backup button function

The utility **PCCLONEEX\_LITE** works only with this external enclosure. It is compliant with Windows XP/VISTA/7 in 32 and 64 bits. Install it from the included CD by clicking on the file **Setup.exe**. Click on **Install** in the install windows. Click **Next**.



Check off if you want to create desktop shortcut and to run program after boot up.



At the end of installation, click on **OK**.

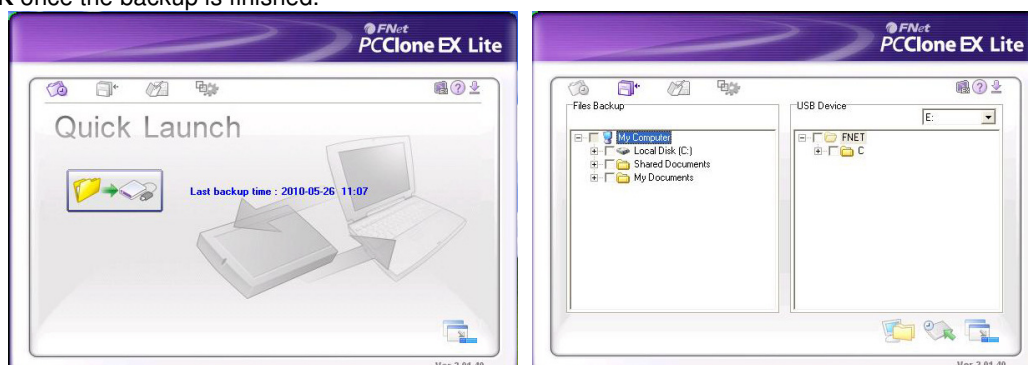


You can launch the backup function from the OTB button in the rear of the enclosure or from the backup utility after configuring the backup.

In the main **PCCLONEEX\_LITE** window, you have 4 window tabs: **Quick Launch**, and 3 others tabs to configure the backup.

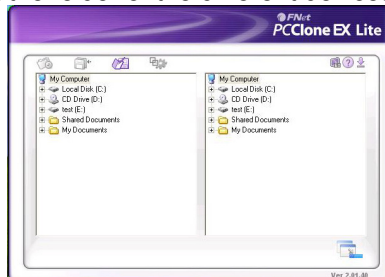
**Quick Launch** enables to launch automatically a planned backup. You have just to click on the image showing a green arrow toward a computer and the external enclosure. You have the last time of data backup.

If you have not planned a backup, you will access to the 2<sup>nd</sup> windows tab. Choose and check off the folder on the C hard disk that you want to save. A confirm window appears: click on **Start** to begin the backup. Click **OK** once the backup is finished.

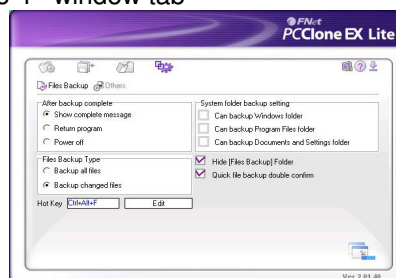


If you want to cancel backup files, uncheck the unwanted folder. By default in the right windows there will be at the level of USB device a folder named **FNET** which will contain the backup files. It is in our case the letter E.

The 3rd window tab enables to list the folder of the different devices.



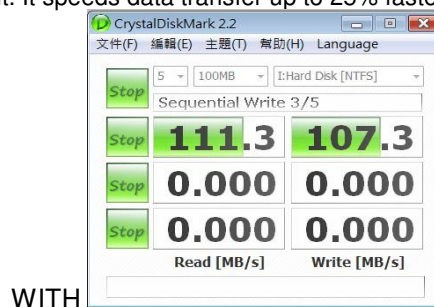
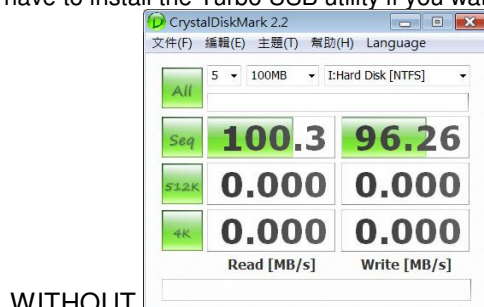
You can set backup options on the 4<sup>th</sup> window tab



You can choose what to do after backup complete. You can choose the **System folder backup setting** and the **Files Backup Type**. You are able to **Hide (Files backup) Folder**. A hot key enables to launch the backup from a keyboard sequence. You can check off the **Quick file backup double confirm**.

## TURBO USB

You have to install the Turbo USB utility if you want to use it. It speeds data transfer up to 25% faster.



**These data are indicative and can vary depending on material used.**

Click on **Setup** in the Turbo USB folder. Click by default **Yes** if there is a windows warning.

Check **Yes, I have read and accept...** to continue.

You can choose the language used between English, Chinese, Korean, Italian, French, German, Hungarian, Lithuanian, Czech, Slovenian, Romanian, pole, Russian, Turkish, Dutch, Slovenian...

You have to execute the utility and to check Turbo mode :



Otherwise the hard disk will work at normal rate. The Turbo USB is compliant with Windows 32/64 bits systems. If you can not set up the utility, check that you are acting as administrator.

## Utilization

- Only use the delivered power supply cable. Another power supply adapter with different specifications can damage your enclosure and your hard disk.
- Do not touch the edge of the power supply connector cable with your computer case
- Connect the external box directly to your motherboard USB port. If you connect to front USB port, check that it supplies enough power.
- Place the external box on stable ground.
- If you plan to not use the external box for a long time, pull out of the USB port
- It is not recommended to use the external box for 24/24 hours.
- Do not power off the external enclosure if you are transferring data or if the LED lights on.
- If you install a 750 Go hard disk or more, you should power down the external box after hours of continuous use because this kind of hard disk tends to heat.
- Manipulate carefully the external enclosure. If you drop it, the hard disk and the external enclosure might be defective.
- Do not unplug the device when you are transferring data or when the LED is blinking.
- The PWR Led lights when the external box has HDD and is functioning. It is flashing whenever there is data transfer.
- This external enclosure is not compliant with Windows 95/NT4/98SE/ME/2000 because it has no driver for these operating systems.
- If you use USB v1.1 or USB v2.0 port, the data transfer will be lower than with USB v3 port.
- You have to install the utility to use the OTB function
- Manipulate carefully the external enclosure. If you drop it, the hard disk and the external enclosure might be defective.

## FAQs

**Q: I can't find the drive under my computer.**

A: Please make sure your drive is correctly installed, also if it is formatted

**Q: I can't find the drive under my computer. You can't see it in my computer.**

A: Check that you have connected the USB cable

Check that your USB driver is updated, that your operating system is updated.

Check that in your motherboard bios that you have enabled **USB Keyboard support** or **Legacy USB support in Advanced Chipset Features** or **Integrated peripherals in Onchip USB**.

Unplug and plug again the external enclosure

**Q: After plugging the USB port, the drive is not spinning at all.**

A: This usually means the AC adapter is not connected yet, so there is no power

**Q: After installing the drive. Why it is still recognized as "Unknown device"**

A: Pull out the external enclosure and reconnect it. Check that your HDD is formatted. Otherwise check if your HDD is not defective.

**Q: Can I use external USB hub?**

A: Yes, USB hub works in the same way as the computer USB ports. Check that it is powerful to powered the hard disk or adds external power supply to the hub

**Q: My computer doesn't have USB 3.0 port, Can I use USB 3.0 host adaptor?**

A: USB 3.0 host adapter works in the same way as the built-in USB ports.



This product is in compliance with the essential requirements of the European Directives for which it is concerned.  
You can download declaration of conformity on the website : <http://www.connectland.eu>