



USB2.0 Host Controller Driver Release Note

Revision 1.0 14/Mar/2003

This document must be NEC Electronics confidential. Do NOT copy and distribute this document.

1. Release file name

Zip file name: usb2drv.ZIP

The following files are included in this ZIP file.

NEHCD .INF	4,281	03-03-03	9:31
NEHCD .SYS	45,104	03-03-03	9:29
NUSBD .SYS	41,440	03-03-03	9:29
NUSBH .SYS	35,440	03-03-03	9:29
NUSBCP.SYS	23,376	03-03-03	9:29

2. Required Environment

1) Operating System

Windows 98 Second Edition/Windows Millennium

Note: Do not use this driver on Windows® 2000 and Windows® XP, and use Microsoft® driver on these operating systems

Microsoft, Windows are either registered trademarks or trademarks of Microsoft Corporation in the United States and/or other countries.

2) Hardware Environment

NEC USB2.0 Host Controller (uPD720100A/uPD720101) is on motherboard or on PCI card. This driver will not guarantee on PC card.

The information in this document is subject to change without notice.

3. Features

- 1) Supports USB2.0 high-speed function
- 2) Supports USB2.0 HUB transaction ^{Note1}
- 3) Supports Suspend/Hibernation ^{Note2}
- 4) Supports high-speed isochronous transfer ^{Note3}
- 5) Supports Remote Wake-up from USB device

Note1: Only evaluated with NEC USB2.0 Hub Controller.

Note2: Make sure USB device supports suspend/hibernation.

Note3: Only evaluated with Crescentec CCD camera DC-1100.

4. Restriction

- 1) When USB device under cascaded hub is unstable or does not work properly, connects USB device to upper ports near to PC.
- 2) System may become unstable when USB device is unplugged during operation. Do not unplug USB device while it is operating.
- 3) There is a case when USB device does not work properly after resuming from suspend or hibernation. In case, unplug and plug USB device again.
- 4) In repeating unplug/plug USB device, make 3 seconds or more interval.
- 5) Do not unplug or plug USB device under following conditions.
 - a) during suspend or going to suspend
 - b) during resuming from suspend
 - c) during hibernation or going to hibernation
 - d) during resuming from hibernation
- 6) Do not disable/enable or uninstall/install "NEC PCI to USB Enhanced Host Controller" from device manager or with any other method. "NEC PCI to USB Enhanced Host Controller" may become unavailable.
- 7) This driver does not support over-current detection.
- 8) When several isochronous devices plugged onto the 2.0hub ports, there is a case they cannot get enough bandwidth. In such case connect one isochronous device directly on host port.

5. Evaluated device

The following peripheral devices are used to test this driver. These devices are not guaranteed to operate successfully under any environment with this driver.

High-speed device

IODATA HDP-i30/US2 (HDD)
IODATA HDP-U40P
Melco DUB2-40G (HDD)
YAMAHA CRW2200UX-VK (CDRW)
EPSON GT-9700F (Scanner)
Canon D1250U2 (Scanner)
Adaptec XHUB4 PULS (Hub)

Full-speed device

Onkyo GX-R5U (speaker)
Plantronics DSP-500 Headset(speaker)
Intel Camera CS330
Logitech QuickCam Express
NEC USB-Clik! PK-CL101S
NEC PK-UP009 (FD Unit)
Iomega Z100USB (Zip)
IBM CD-210PU (CD-ROM)
Princeton PRD-CF (Cardreader CF)
Princeton PRD-SM (Cardreader SM)
System Talks USB-HD43P (HDD)
Melco DPN-6GUSB (HDD)
NEC PK-ST002 (CD-R/W)
TREK TrumbDrive 16M
Melco MOU-640RH(MO)
Canon N656U (scanner)
HP Photo Smart P1100(Printer)
Canon BJ F210 (Printer)
Prolific BT Host link USB cable (link cable)
COREGA CG-FEUSBTX (100 Base-TX/10 Base-T)
Melco LUA-TX (100 Base-TX/10 Base-T)
IODATA USBMHB4 (Hub)

Low-speed device

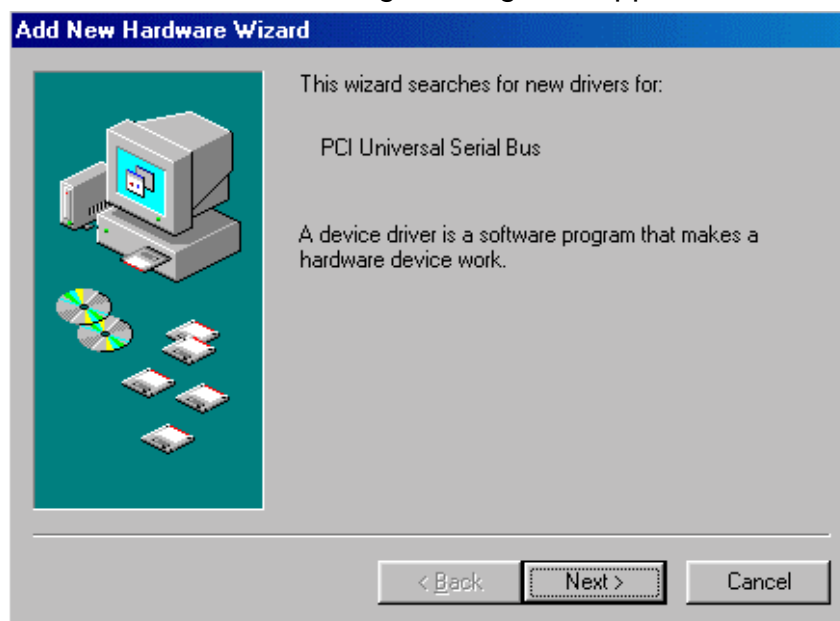
NEC PK-GP201 (Play Stick)
Sanwa JY-P33 (Game pad)
Microsoft Wheel Mouse Optical
NEC PK-KB027(Cypress mouse)

The information in this document is subject to change without notice.

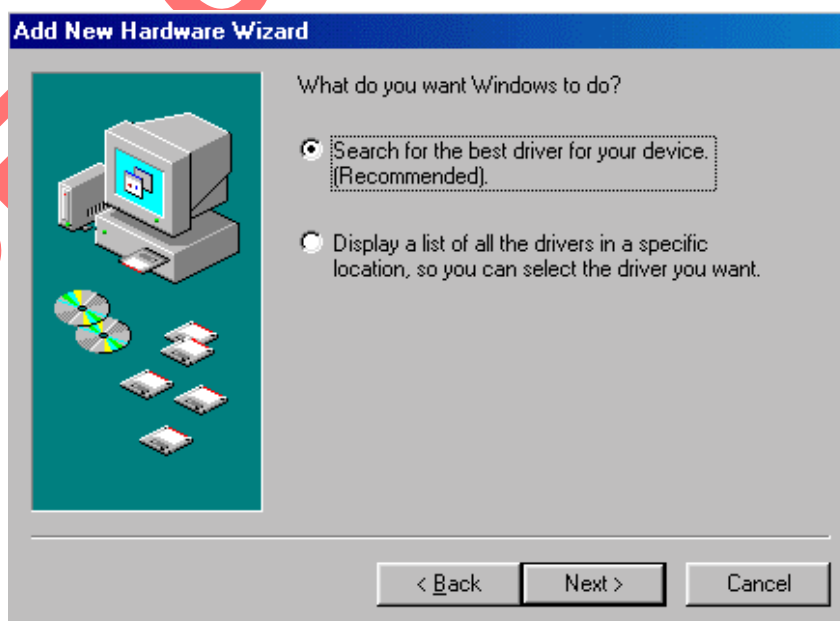
6. How to install

This chapter shows how to install USB2.0 Driver on Windows 98 Second Edition.

- 1) In using USB2.0 PCI card, plug in PCI card on PCI slot on your system.
- 2) Start windows and the following message will appear. Click "Next".



- 3) Select "Search for the best driver for your device[Recommended]" and click "Next".



The information in this document is subject to change without notice.

- 4) Select "Specify a location" and type correct directory where the Host controller driver locates. Click "Next".

This is the example the driver locates on "A:\USB2DRV".



- 5) System will start to search the driver. The following message will appear when the driver is located correctly on the specified directory on 4).



NEC

- 6) If the following message appears, the installation has completed.



The information in this document is subject to change without notice.